

==== Shimadzu LabSolutions Analysis Report =====

Sample Name : DL V16 R4
 Sample ID :
 Data Filename : DL V16 R4_20241004_DL V16_SFB_B_ST1_0.8 mL_45 min_Start_002.lcd
 Method Filename : SFB_B_ST1_0.8 mL_45 min_Start.lcm
 Batch Filename : 20241004_DL V16.lcb
 Vial # : 3-2
 Injection Volume : 10 uL
 Date Acquired : 10/4/2024 10:14:44 AM
 Date Processed : 10/4/2024 10:59:45 AM

Sample Type : Unknown
 Acquired by : System Administrator
 Processed by : System Administrator

<Method>

<<Header>>

Generated : 4/24/2024 3:47:23 PM
 GeneratedBy : System Administrator
 Modified : 10/4/2024 8:21:00 AM
 ModifiedBy : System Administrator

<<System Controller>>

Model : SCL-40
 Event1 : Off
 Event2 : Off
 Sample Load Timing : Off

<<Data Acquisition>>

LC Stop Time : 45.00 min
 Detector A Name : Detector A
 Detector A Sampling Frequency : 2 Hz
 Detector A Start Time : 0.00 min
 Detector A End Time : 45.00 min

<<Pump>>

Mode : Isocratic flow
 Pump A : LC-40D
 Pump A Flow/Pressure : Flow
 Pump System A Flow : 0.8000 mL/min
 Pump System A Flow Slope : 20.00 min
 Pump A PressMax : 90 bar
 Pump A PressMin : 0 bar
 Pump A Valve Model : Switching Valve
 Pump A Valve : B
 Pump A Compressibility Setting : On
 Pump A Mobile Phase Settings : 0.45 /GPa

<<Autosampler>>

Autosampler Model : SIL-40
 Enable Autosampler : Use
 Rinse Type : External only
 Specify Plate : Off
 Rinsing Volume : 500 uL
 Cut Off Loop : Off
 Specify Needle Stroke : Off
 Rinsing Speed : 35 uL/sec
 Sampling Speed : 5.0 uL/sec
 Rinse Port R0 Purge Time : 2.0 min
 Measuring Line Purge Time : 5.0 min
 Rinse Mode : Before and after aspiration
 Rinse Dip Time : 0 sec
 Measuring Line Purge Volume : 100 uL
 Air Gap Volume : Off
 Rinse Port Liquid : R0

<<Sample Pretreatment>>

Mode : Standard

<<Oven>>

Oven Model : CTO-40C
 Enable Oven : Use
 Oven Temperature : 25 C
 Maximum Temperature : 105 C

Ready Check	: On
Wait Time	: 5 min
Ready Range	: 1.0 C
Fan Speed	: Auto
Cooler Mode	: Auto
Valve 1/L	: FCV-0206
Valve 1/L Position	: 1: Column1

<<Detector A>>

Model	: RID-20A
Mode	: Analytical
Polarity	: +
Use Cell Temp.	: Use
Cell Temp.	: 40.0 C
Response	: 1.5 sec
Intensity Unit	: Volt
Auxiliary Range	: 1.0E-3 RIU/V
Recorder Range	: 100.00 uRIU/FS
Synchronize with Auxiliary	: Off
Purge Time	: 20 min

<<LC Time Program>>

Time	Module	Command	Value	Comment
0.01	RID-20A(DET.A)	Zero		
45.00	Controller	Stop		

<<Peak Integration>>

<Detector A>

```

Detector Type      : 1
Channel            : Ch1
Width              : 5 sec
Slope              : 2000 uV/min
Drift              : 0 uV/min
T.DBL              : 1000 min
Max Slices         : 0
Peak Top Detection : Normal
RT Compensation Mode : Fine
Min.Area/Height is made effective in Manual Integration : Off
Min.Area/Height    : 1000 counts
Calculated by       : Area
Noise Calculation Settings : Noise Data : Current Data
                        : Calculation Method : ASTM
                        : Range : Whole Range
                        : Interval : 0.5 min
                        : Include the Peak Detected Range : Off
                        : Detection Limit Coefficient : 3.3
                        : Quantitative Limit Coefficient : 10.0
Drift Calculation Settings : 0.000 - 15.000 min

```

<<Integration Time Program(Method)>>

<Detector A>

Channel : Ch1
Time Program : None

<<Integration Time Program(Data)>>

<Detector A>

Channel : Ch1
Time Program : None

<<Identification>>

<Detector A>

Window/Band	: Window
Window	: 5.00 %
Identification Method	: Absolute
Peak Selection	: Closest Peak
Display not identified peaks	: Not display

<<Quantitative>>

<Detector A>

Quantitative Method	: External Standard
Calculated by	: Area
# of Calibration Levels	: 14
Curve Fit Type	: Linear
Zero	: Not Forced
Weighting Method	: None
X Axis of Calib. Curve	: Conc.
Units	: mol/L
Format of Conc.	: Decimals
Format of Conc. Figure	: 5
Group Type	: Not Used

Check %Dev(Standard) : No
 Check Accuracy[%](Standard) : No
 Check %Dev(Control) : No
 Check Accuracy[%](Control) : No
 Check %Dev(Additive) : No
 Check Accuracy[%](Additive) : No
 Check %Dev(Unknown) : No
 Check Accuracy[%](Unknown) : No
 Check Quantitation Limit : No
 Check Detect Limit : No

<<Compound Table>>

<Detector A>

ID# : 1
 Name : Methanol
 Type : Target
 Channel : Ch1
 Retention Time : 14.400 min
 Retention Index : 0
 Concentration : [1]=3.016738 [2]=1.049395 [3]=0.4943277
 [4]=0.2893701 [5]=0.1127578 [6]=0.06136267
 [7]=0.01619725 [8]=3.016738 [9]=1.049395
 [10]=0.4943277 [11]=0.2893701 [12]=0.1127578
 [13]=0.06136267 [14]=0.01619725
 Peak Selection : Default(Closest Peak)
 Calculated by : Default(Area)
 Curve Fit Type : Default(Linear)
 Zero : Default(Not Forced)
 Weight : Default(None)
 Window/Band : Default(Window)
 Spiked : 0.000
 1st Coefficient : 4.720087e+005
 Intersection : 1.693726e+003
 Correction Factor : 1.000000
 Standard concentration factor : 1.000000

ID# : 2
 Name : Glycerin
 Type : Target
 Channel : Ch1
 Retention Time : 10.000 min
 Retention Index : 0
 Concentration : [1]=2.958375 [2]=1.078646 [3]=0.5353454
 [4]=0.3066948 [5]=0.114594 [6]=0.05901699
 [7]=0.0117174 [8]=2.958375 [9]=1.078646
 [10]=0.5353454 [11]=0.3066948 [12]=0.114594
 [13]=0.05901699 [14]=0.0117174
 Peak Selection : Default(Closest Peak)
 Calculated by : Default(Area)
 Curve Fit Type : Default(Linear)
 Zero : Default(Not Forced)
 Weight : Default(None)
 Window/Band : Default(Window)
 Spiked : 0.000
 1st Coefficient : 7.326784e+006
 Intersection : 2.573900e+005
 Correction Factor : 1.000000
 Standard concentration factor : 1.000000

ID# : 3
 Name : n-Propanol
 Type : Target
 Channel : Ch1
 Retention Time : 20.000 min
 Retention Index : 0
 Concentration : [1]=3.02526 [2]=1.092217 [3]=0.5139845
 [4]=0.3105323 [5]=0.09785473 [6]=0.04497364
 [7]=0.01087275 [8]=3.02526 [9]=1.092217
 [10]=0.5139845 [11]=0.3105323 [12]=0.09785473
 [13]=0.04497364 [14]=0.01087275
 Peak Selection : Default(Closest Peak)
 Calculated by : Default(Area)
 Curve Fit Type : Default(Linear)
 Zero : Default(Not Forced)
 Weight : Default(None)
 Window/Band : Default(Window)
 Spiked : 0.000
 1st Coefficient : 3.955755e+006
 Intersection : -2.585461e+004

Correction Factor : 1.000000
Standard concentration factor : 1.000000

ID# : 4
Name : 1,2 Propandiol
Type : Target
Channel : Ch1
Retention Time : 12.400 min
Retention Index : 0
Concentration : [1]=2.977546 [2]=1.016412 [3]=0.5030017
[4]=0.3027638 [5]=0.1023958 [6]=0.04970167
[7]=0.01157971 [8]=2.977546 [9]=1.016412
[10]=0.5030017 [11]=0.3027638 [12]=0.1023958
[13]=0.04970167 [14]=0.01157971

Peak Selection : Default(Closest Peak)
Calculated by : Default(Area)
Curve Fit Type : Default(Linear)
Zero : Default(Not Forced)
Weight : Default(None)
Window/Band : Default(Window)
Spiked : 0.000
1st Coefficient : 5.771075e+006
Intersection : 6.007717e+004
Correction Factor : 1.000000
Standard concentration factor : 1.000000

ID# : 5
Name : 1,3 Propandiol
Type : Target
Channel : Ch1
Retention Time : 13.000 min
Retention Index : 0
Concentration : [1]=2.976375 [2]=0.9968958 [3]=0.4990984
[4]=0.2900131 [5]=0.10734 [6]=0.04944145
[7]=0.0100184 [8]=2.976375 [9]=0.9968958
[10]=0.4990984 [11]=0.2900131 [12]=0.10734
[13]=0.04944145 [14]=0.0100184

Peak Selection : Default(Closest Peak)
Calculated by : Default(Area)
Curve Fit Type : Default(Linear)
Zero : Default(Not Forced)
Weight : Default(None)
Window/Band : Default(Window)
Spiked : 0.000
1st Coefficient : 5.532080e+006
Intersection : 6.014722e+004
Correction Factor : 1.000000
Standard concentration factor : 1.000000

ID# : 6
Name : iso-Propanol
Type : Target
Channel : Ch1
Retention Time : 16.825 min
Retention Index : 0
Concentration : [1]=3.03666 [2]=1.003405 [3]=0.5418687
[4]=0.3101858 [5]=0.1067771 [6]=0.04972951
[7]=0.01397083 [8]=3.03666 [9]=1.003405
[10]=0.5418687 [11]=0.3101858 [12]=0.1067771
[13]=0.04972951 [14]=0.01397083

Peak Selection : Default(Closest Peak)
Calculated by : Default(Area)
Curve Fit Type : Default(Linear)
Zero : Default(Not Forced)
Weight : Default(None)
Window/Band : Default(Window)
Spiked : 0.000
1st Coefficient : 3.797216e+006
Intersection : -2.284739e+004
Correction Factor : 1.000000
Standard concentration factor : 1.000000

ID# : 7
Name : Hydroxyacetone
Type : Target
Channel : Ch1
Retention Time : 13.300 min
Retention Index : 0
Concentration : [1]=2.855514 [2]=0.9609004 [3]=0.4875675

	[4]=0.3072624	[5]=0.1038742	[6]=0.04860286
	[7]=0.009361501	[8]=2.855514	[9]=0.9609004
	[10]=0.4875675	[11]=0.3072624	[12]=0.1038742
	[13]=0.04860286	[14]=0.009361501	

Peak Selection : Default(Closest Peak)
 Calculated by : Default(Area)
 Curve Fit Type : Default(Linear)
 Zero : Default(Not Forced)
 Weight : Default(None)
 Window/Band : Default(Window)
 Spiked : 0.000
 1st Coefficient : 4.865699e+006
 Intersection : 5.855022e+004
 Correction Factor : 1.000000
 Standard concentration factor : 1.000000

ID# : 8
 Name : Ethylenglykol
 Type : Target
 Channel : Ch1
 Retention Time : 12.200 min
 Retention Index : 0
 Concentration : [1]=2.933794 [2]=1.030353 [3]=0.4898163
 [4]=0.3033639 [5]=0.09840986 [6]=0.059971
 [7]=0.01068632 [8]=2.933794 [9]=1.030353
 [10]=0.4898163 [11]=0.3033639 [12]=0.09840986
 [13]=0.059971 [14]=0.01068632

Peak Selection : Default(Closest Peak)
 Calculated by : Default(Area)
 Curve Fit Type : Default(Linear)
 Zero : Default(Not Forced)
 Weight : Default(None)
 Window/Band : Default(Window)
 Spiked : 0.000
 1st Coefficient : 4.284813e+006
 Intersection : 4.449721e+003
 Correction Factor : 1.000000
 Standard concentration factor : 1.000000

ID# : 9
 Name : Ethanol
 Type : Target
 Channel : Ch1
 Retention Time : 16.000 min
 Retention Index : 0
 Concentration : [1]=3.010594 [2]=1.02339 [3]=0.5257763
 [4]=0.2939754 [5]=0.0961865 [6]=0.04960971
 [7]=0.01299818 [8]=3.010594 [9]=1.02339
 [10]=0.5257763 [11]=0.2939754 [12]=0.0961865
 [13]=0.04960971 [14]=0.01299818

Peak Selection : Default(Closest Peak)
 Calculated by : Default(Area)
 Curve Fit Type : Default(Linear)
 Zero : Default(Not Forced)
 Weight : Default(None)
 Window/Band : Default(Window)
 Spiked : 0.000
 1st Coefficient : 2.109543e+006
 Intersection : -9.590194e+003
 Correction Factor : 1.000000
 Standard concentration factor : 1.000000

ID# : 10
 Name : Propionsäure
 Type : Target
 Channel : Ch1
 Retention Time : 13.600 min
 Retention Index : 0
 Concentration : [1]=2.962704 [2]=0.9915078 [3]=0.5019324
 [4]=0.3085198 [5]=0.1036906 [6]=0.04835313
 [7]=0.01168534 [8]=2.962704 [9]=0.9915078
 [10]=0.5019324 [11]=0.3085198 [12]=0.1036906
 [13]=0.04835313 [14]=0.01168534

Peak Selection : Default(Closest Peak)
 Calculated by : Default(Area)
 Curve Fit Type : Default(Linear)
 Zero : Default(Not Forced)
 Weight : Default(None)
 Window/Band : Default(Window)

Spiked : 0.000
 1st Coefficient : 4.601450e+006
 Intersection : -1.609005e+003
 Correction Factor : 1.000000
 Standard concentration factor : 1.000000

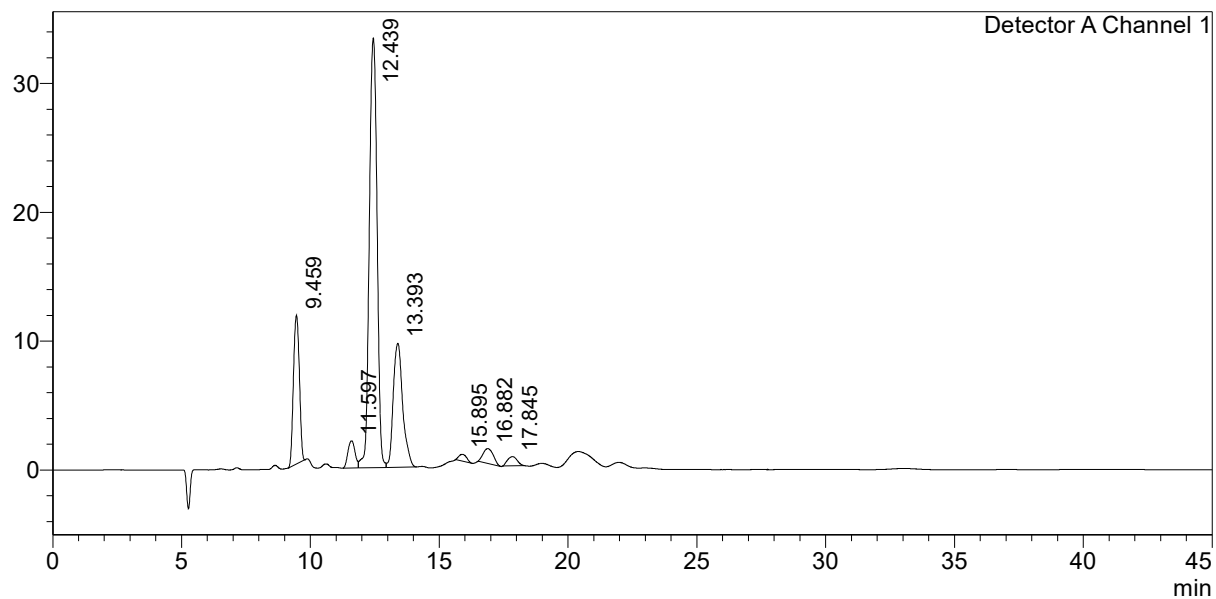
<<Column Performance>>

<Detector A>

Calculation Method : USP
 Unretained Peak Time : Time at 1st Peak
 Column Length : 150 mm
 Calculate Identified Peaks Only : Off
 Calculation of Relative Retention Time : Off

<Chromatogram>

mV



<Peak Table>

Detector A Channel 1

Peak#	Ret. Time	Area	Height	Conc.	Unit	Mark	Name
1	9.459	184386	11530	0.000			
2	11.597	40224	2104	0.008	mol/L		Ethylenglykol
3	12.439	699539	33333	0.111	mol/L	V	1,2 Propandiol
4	13.393	247204	9620	0.039	mol/L	V	Hydroxyacetone
5	15.895	11154	528	0.010	mol/L		Ethanol
6	16.882	31558	1148	0.014	mol/L		iso-Propanol
7	17.845	18688	714	0.000			
Total		1232752	58977				